

Indian Springs Community Association East & West

Jefferson and Augusta Way
Indio, CA 92201

Scheme 6 Colors



OW_127 Amazing Grace
Stucco



72 Toga
Trim



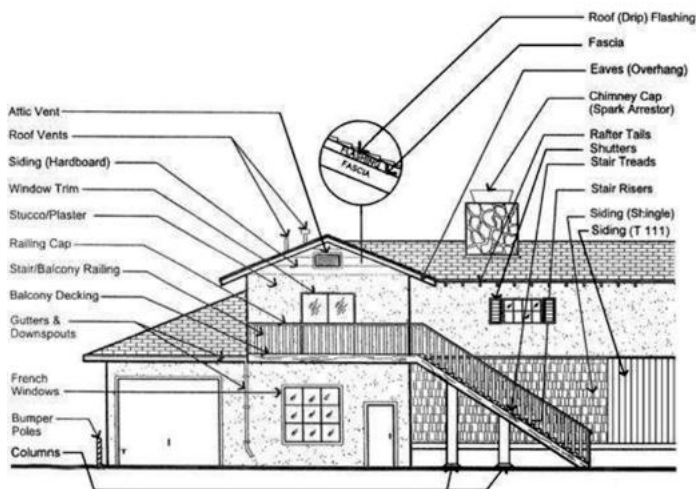
13 Sandalwood
Accent

Special Notes

Color Disclaimer: It is recommended that these color schemes NOT be used for touch up but for repaint of entire areas to ensure color consistency.

Note: Schemes 1, 2, 4 & 5 were updated April 8, 2014.

Architectural Detail Guide



Courtesy Discount

Provide your Community or Development account number and save up to 25% on Vista Paint manufactured paint products.

Nearby Vista Paint Store Locations

Palm Desert (3 miles)
77920 Wolf Road
Palm Desert, CA 92260
(760) 772-4755

Cathedral City (12 miles)
68-956 Perez Road
Cathedral City, CA 92234
(760) 202-2778

Hemet (40 miles)
101 East Florida Ave
Hemet, CA 92543
(951) 652-0641

Color Advisory Disclaimer: Vista Paint Company does not advise using the printed copy of the color chips to make final decisions on color choices. There can be a difference between the actual color chip and the printed page due to resolution qualities of each printer. If a color match is critical we would suggest that you obtain actual color chips from one of our stores or order the chips on line to be mailed directly to you.